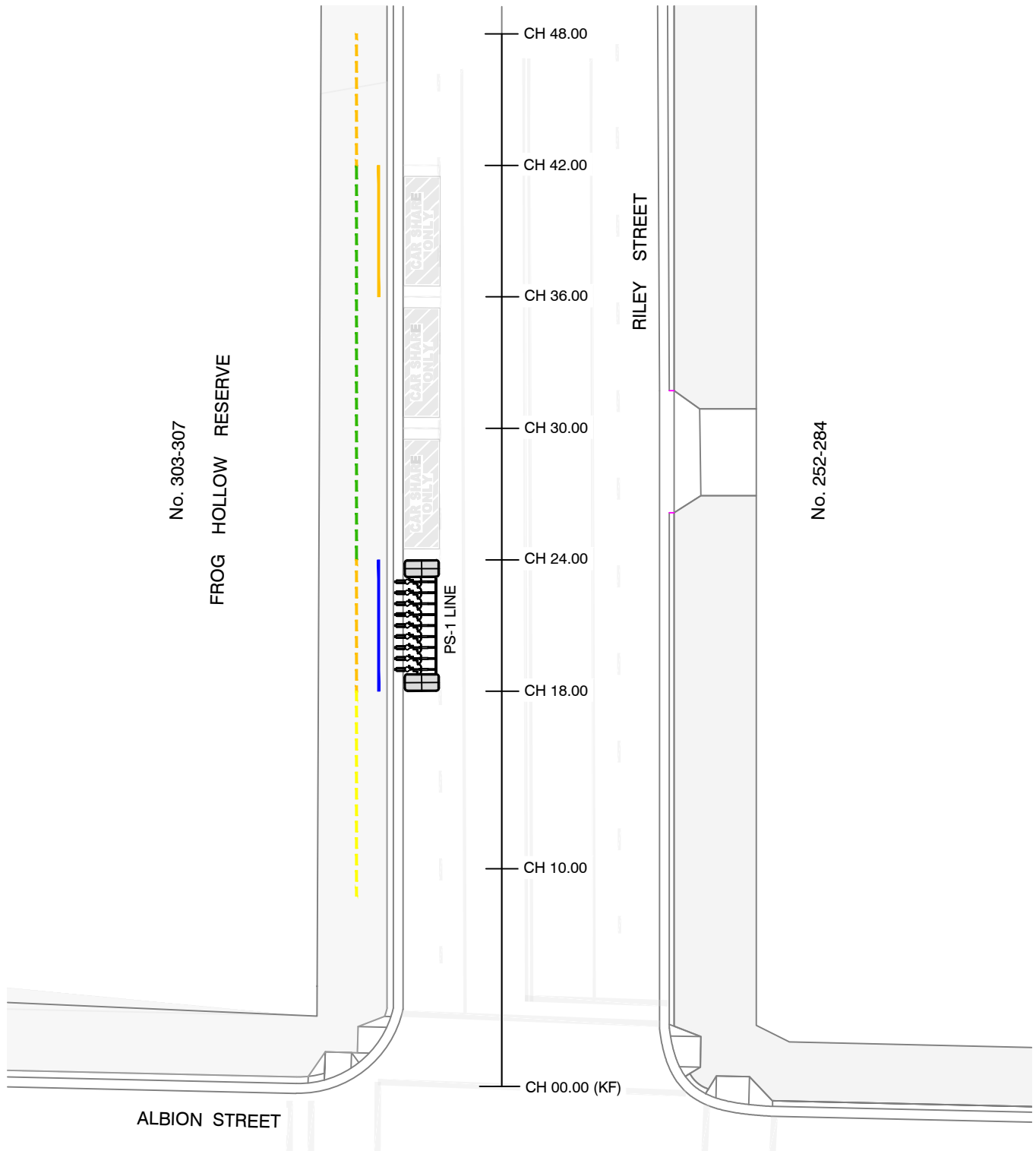







**Plan: Proposed On Street Bike Parking -  
303-307 Riley Street, Surry Hills**






**LEGEND**

**EXISTING**

-  2P PARKING
-  P(COUNCIL ONLY)
-  P(CAR SHARE ONLY)

**PROPOSED**

-  P (BIKE ONLY)
-  P (COUNCIL ONLY)
-  BIKE ENVELOPE  
90